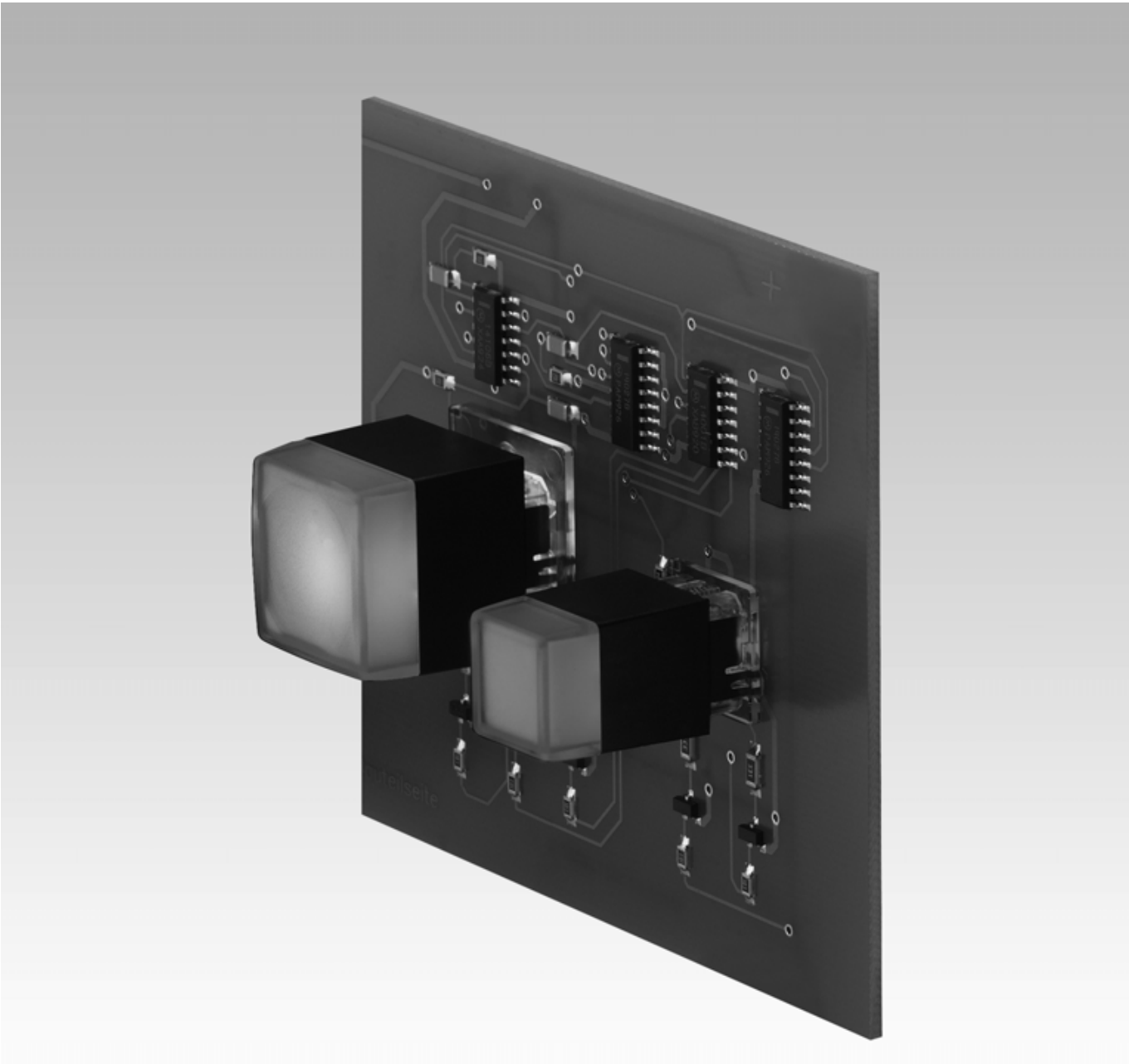




EAO Product Information

Series 95



Index

Series 95

	Description	Seite 575
	Product assebly	Seite 576
	Product range	
	- phushbuttons for standard mounting	Seite 577
	- accessories	Seite 578
	Technical Data	Seite 580

Fitting

The pushbutton should be plugged-in to the mounting hole and soldered onto the printed circuit board (PCB).

Construction

The large lens is available in two versions, convex or concave form. The small lens is available only in flat form. The large pushbutton has space for 3 SMD-LED's and the small one for 2 SMD-LED's.

Marking

The diffuser can be printed or engraved, or a film insert (use series 97 or 99 parts) can be fitted between the diffuser and the lens.

Mounting

Suitable for mounting on PCB's with thickness of 1.5 to 2.5 mm (use SMD-LED's for illumination).

The separated spring clip contact holds the switch in place during the assembly and soldering process.

The soldered joint makes the electrical contact and fixes the switch in the PCB.

Maximum soldering-temperature is 260 °C for 5 seconds.

There is a solder stop between the SMD-LED's and the contact mounting areas.

The PCB layout and mounting details are shown in the dimensional drawings.

The switch must be used with a lens.

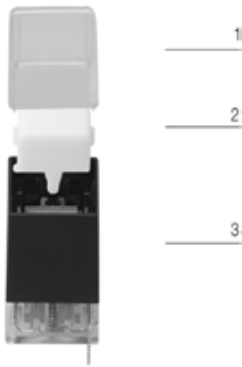
Switching system

Gold-plated momentary contact, 1 normally open, self-cleaning.

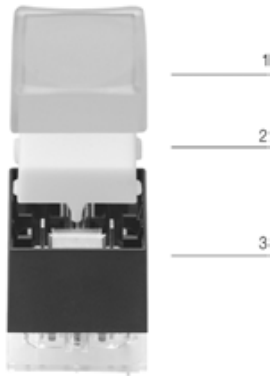
*All dimensions in mm.
We reserve the right to modify technical data.*

illuminated-/pushbutton

- 1 lens
- 2 Diffuser
- 3 switching element



- 1 lens
- 2 Diffuser
- 3 switching element



illuminated-/pushbutton




	contacts	switching action	lens	Ø 19.05 x 19.05 mm part no.	Ø 12.70 x 12.70 mm part no.	technical drawing	mounting dimensions	component layout	
illuminated-/pushbutton	1 NO	M	matt neutral, flat		95-313.720	1	1	1	0,003
			matt neutral, concave	95-414.740		1	1	1	0,004
			matt neutral, convex	95-414.730		1	1	1	0,004
			polished clear, flat	95-414.750	95-313.750	1	1	1	0,003
			polished clear, concave	95-414.770		1	1	1	0,004

contacts: normally open = NO

switching action: momentary action = M


at front

lens

	shape	colour	∅ 19.05 x 19.05 mm Typ-Nr.	∅ 12.70 x 12.70 mm Typ-Nr.	
lens	flat	mat, translucent	95-704.720	95-703.720	0,001
		clear, transparent	95-704.750	95-703.750	0,001
	concave	mat, translucent	95-704.740		0,001
		clear, transparent	95-704.770		0,001
	convex	mat, translucent	95-704.730		0,001
		clear, transparent	95-704.760		0,001




diffuser

	colour	∅ 19.05 x 19.05 mm Typ-Nr.	∅ 12.70 x 12.70 mm Typ-Nr.	
diffuser	blue	95-804.620	95-803.620	0,001
	yellow	95-804.420	95-803.420	0,001
	grey	95-804.820	95-803.820	0,001
	green	95-804.520	95-803.520	0,001
	without	95-804.020	95-803.020	0,001
	clear	95-804.720	95-803.720	0,001
	orange	95-804.320	95-803.320	0,001
	red	95-804.220	95-803.220	0,001
	white	95-804.920	95-803.920	0,001



at back

switching element

	contacts	∅ 19.05 x 19.05 mm Typ-Nr.	∅ 12.70 x 12.70 mm Typ-Nr.	
switching element no lens/diffuser	1 NO	95-414.000		0,003
			95-313.000	0,002



for combining with lens or diffuser
contacts : 1 normally open = 1NO

assembling

lens remover

for large and small switches

	part no.	img
lens remover	95-900.005	



mounting tool

for large and small switches

	part no.	img
mounting tool	95-900.009	



illuminated-/pushbutton

material

plastic

PC / PEI self extinguishing as per UL 94 V0, Cd-free

material of contacts

CuSn, contact gold-plated, soldering terminal tinned

mechanical characteristics

actuating travel

4.5 mm

actuating force

3 N to end position

switching point

at 2.5 mm operation

life time

> 5 million operations as per IEC 512-5, test 9a

electrical characteristics

power rating

min. 1 mVDC/100 μ A

max. 48 VDC/50 mA

electric strength

\leq 50 m Ω as per IEC 512-2, test 2b

electric strength

2.5 kVAC as per IEC 512-2-11

Environmental characteristics

degree of protection

front as per IP40

operating temperature

-25°C to + 70°C

storage temperature

-40°C to + 80°C

resistance to vibration

10 g, at 10 - 2000 Hz, 0.75 mm as per IEC 512-4-4

resistance to shock

50 g/11 ms as per IEC 512-4-3

illumination

SMD-LED type

P-LCC package or similar, radiation angle approx. 120°;
use of smaller SMD-LED is possible

SMD-LED configurations size

max. 2 SMD-LED's

(switch size 12.70 mm)

max. 3 SMD-LED's

(switch size 19.05 mm)

single colour or multi-colour

circuit layout

see dimension drawing

tolerance of SMD-LED on the printed circuit board \pm 0.2 mm

height of SMD-LED

max. 2.1 mm

Drawings on request.

Note:

More information about the PCB-Software can be found at

www.pcad.com/en/library.

	EAO AG Tannwaldstrasse 88 4601 Olten, Switzerland
E-mail	info@eao.com
Website	www.eao.com
	Belgium
Phone	+32/2 456 00 10
E-mail	sales.ebl@eao.com
	China
Phone	+852/27 86 91 41
E-mail	sales.ehk@eao.com.hk
	France
Phone	+33/1 64 43 37 37
E-mail	sales.es@eao.com
	Germany
Phone	+49/201 85 87 0
E-mail	sales.ede@eao.com
	Japan
Phone	+81/3 5401 0953
E-mail	sales.esj@eao.com
	Netherlands
Phone	+31/78 653 17 00
E-mail	sales.enl@eao.com
	Sweden
Phone	+46/8 683 86 60
E-mail	sales.esw@eao.com
	Switzerland
Phone	+41/62 388 95 00
E-mail	sales.ech@eao.com
	United Kingdom
Phone	+44/1444 236000
E-mail	sales.euk@eao.com
	USA
Phone	+1/203 877 4577
E-mail	sales.eus@eao.com
	Other Countries
Fax	+41/62 296 21 62
E-mail	info@eao.com
Website	www.eao.com